

ANNEX
DynamO Théâtre

CONTRACT RIDER
Misstart
A Production for Stage Clowns

THE PRESENTER HEREBY UNDERTAKES AND AGREES AS FOLLOWS:

1. To ensure that **one person** is on hand and responsible from the time the company arrives to the moment it leaves after the performance.
2. To provide a solid stage of **26' (7,90m) wide by 20' (6,10m) deep and 12' (3,65m) high.**
3. **To provide three (3) technicians for the light, sound set-up and load-out.**
4. To anticipate a minimum of **four (4) hours** before the performance to build the set, focus the lights, set the lights and sound levels. To set aside an additional period of **two hours (2 hours)** for the performers' warm-up prior to each performance, which amounts to **6 hours of preparation prior to a performance.**

To anticipate a period of **one (1) hour** following the last performance for the strike and load-out of the set.
5. To provide:
One (1) double standard compact disc player
One (1) microphone SM 58 in stage management booth
Two (2) Microphone SM 58 – t.b.d.
One (1) PCC microphone – t.b.d.
One (1) appropriate sound board (8 inputs - 4 outputs)
Loud speakers for the hall and an appropriate amplifying system
Two (2) stage monitors and an appropriate amplifying system
The appropriate wiring
6. To provide the required lighting equipment – including 5 Iris (see lighting plot attached).
7. To provide one clean heated dressing room for two (2) persons **with mirrors, toilets and running water near the stage area.**
8. To provide bottled water (2 liters per performer), non alcoholic cold beverages (juice) for the performers and the technicians two hours before each performance.

9. **To provide one bag of ice cubes (in case of injury) immediately accessible backstage during the performance.**
10. To provide parking space for one Econoline-type van.
11. **To provide grid and floor plans of theatre at the signature of the agreement (i.e. at least 12 weeks before performance).**

SIGNED IN MONTREAL ON:

THE COMPANY

Patrice Saint-Pierre
Marketing Director
for DynamO Théâtre

Technical Director:
DynamO Théâtre

THE PRESENTER

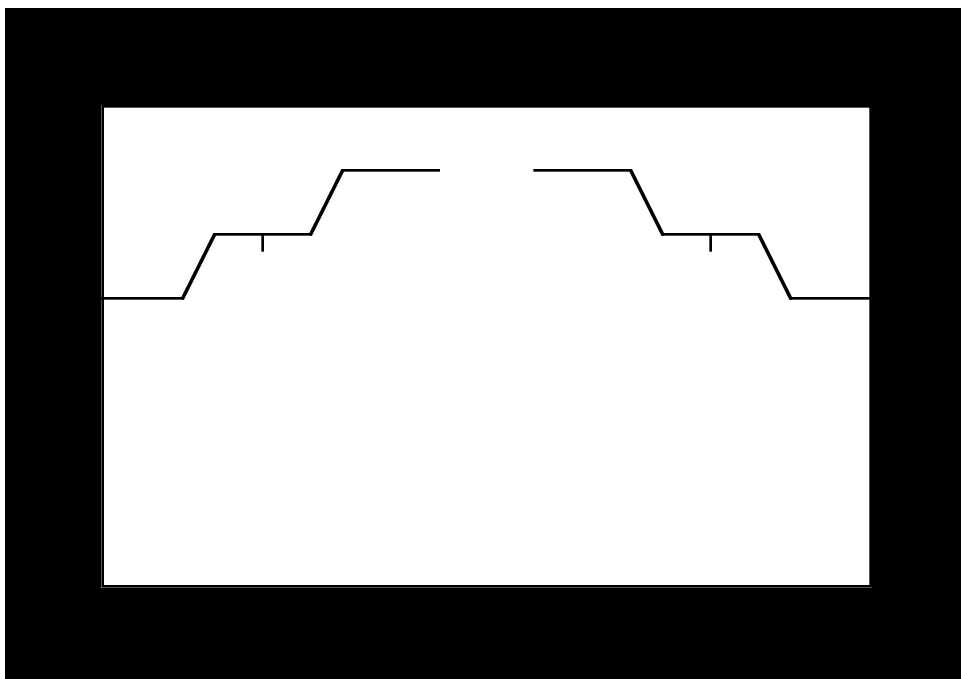
Contact

Technician

Chloé Besner
Tél.: (514) 274-7644
Fax: (514) 274-1034
cbesner@dynamotheatre.qc.ca
www.dynamotheatre.qc.ca

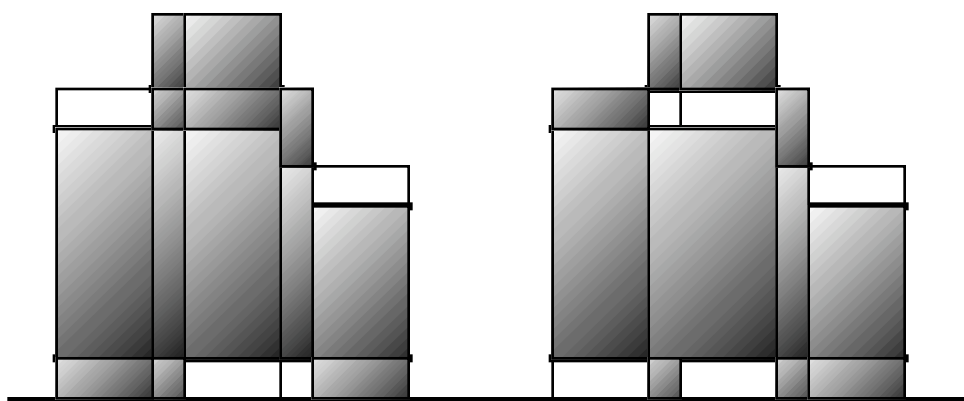
FAUX DÉPARTS = MISSTART DÉCOR / SET

DynamO Théâtre



Échelle/Scale:
1/4" = 1'0"

Toile de coton peinte 16' x 20' (488 cm x 610 cm) collée au sol par du "caméra tape" noir.
Painted canvas 16' x 20' (488 cm x 610 cm) taped to the floor with black camera tape.



2 séries de paravents en toile de coton peinte et en bois massif. Les 2 paravents tournent sur un axe situé au centre de ceux-ci.

La hauteur maximum des paravents est de 8' (244 cm).

2 sets of cotton and wood folding screens . The two screens revolve around an axis located in the middle of each one. The maximum height is 8' (244 cm).

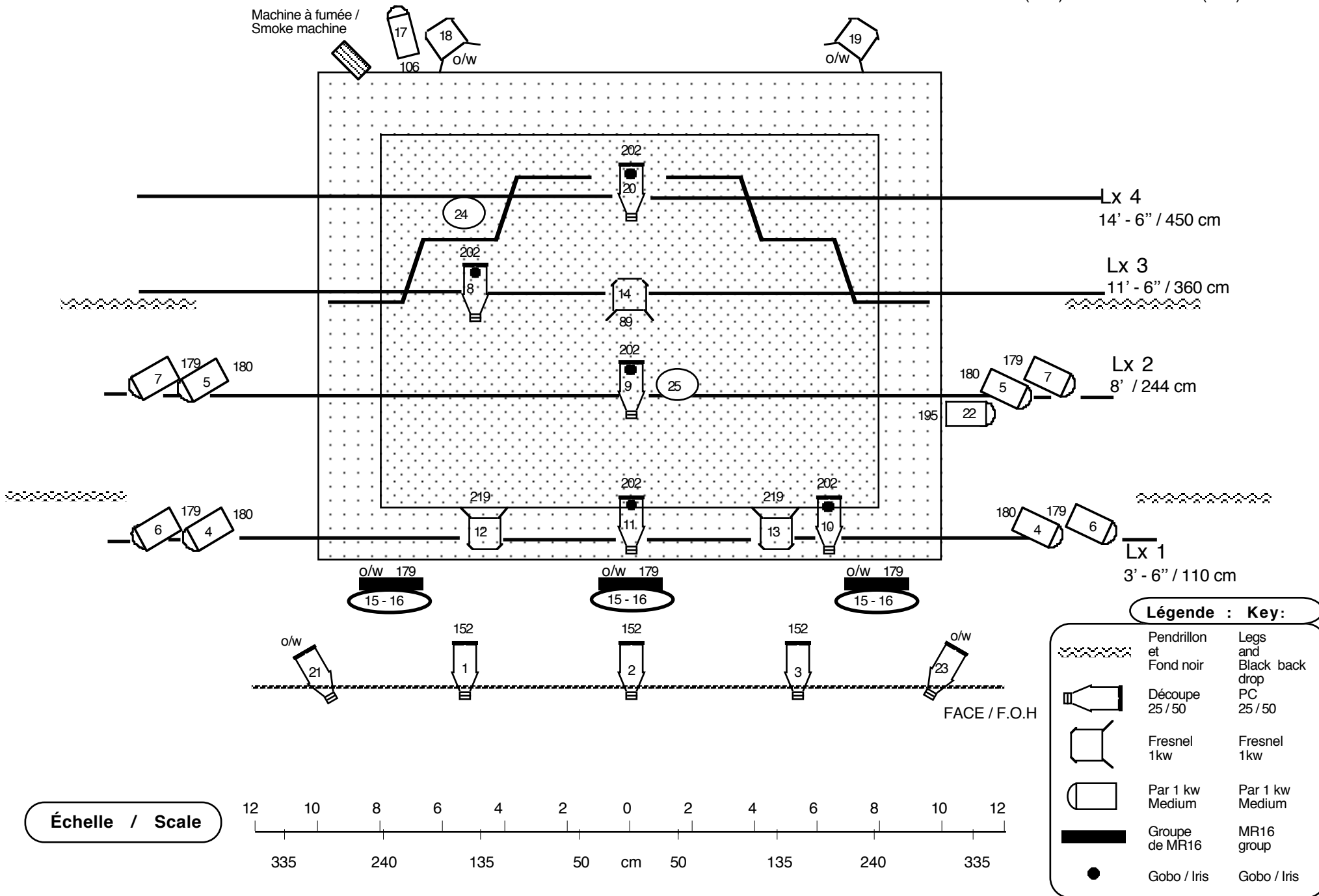
FAUX DÉPARTS - MISSTART

Plan d'éclairage / Light Plot

DynamO Théâtre

Tél. : (514) 274-7644 / Fax : (514) 274-1034

Machine à fumée /
Smoke machine



FAUX DÉPARTS - MISSTART

DynamO Théâtre
Tél: (514) 274-7644 / Fax: (514) 274-1034

FEUILLE EFFETS / LINE SET SHEET

No de Gradateur / Dimmer Nb.	No de Canal / Channel Nb.	Quantité / Quantity	Type d'instrument / Kind of instrument	Position sur perche / Line set	Couleur / Color		Zone / FX
					Rosco	Lee	
	1	1	Découpe 25/50	Lx 1	304	152	
	2	1	Découpe 25/50	Lx 1	304	152	
	3	1	Découpe 25/50	Lx 1	304	152	
	4	2	Par 1kw Medium	Lx 1	357	180	
	5	2	Par 1kw Medium	Lx 2	357	180	
	6	2	Par 1kw Medium	Lx 1	15	179	
	7	2	Par 1kw Medium	Lx 2	15	179	
	8	1	Découpe 25/50	Lx 1	372	202	
	9	1	Découpe 25/50	Lx 1	372	202	
	10	1	Découpe 25/50	Lx 1	372	202	
	11	1	Découpe 25/50	Lx 1	372	202	
	12	1	Fresnel 1kw	Lx 3	93	219	
	13	1	Fresnel 1kw	Lx 3	93	219	
	14	1	Fresnel 1kw	Lx 3	89	89	
	15	3	Quartz (Cie / Co)	Au sol / Floor stand	O / W	O / W	
	16	3	Quartz (Cie / Co)	Au sol / Floor stand	15	179	
	17	1	Par 1kw Medium	Au sol / Floor stand	27	106	
	18	1	Fresnel 1kw	Au sol / Floor stand	O / W	O / W	
	19	1	Fresnel 1kw	Au sol / Floor stand	O / W	O / W	
	20	1	Découpe 25/50	Lx 1	372	202	
	21	1	Découpe 25/50	Lx 1	O / W	O / W	
	22	1	Par 1kw Medium	Lx 2	383	195	
	24	1	Aimant / Magnet (Cie / Co)	Circuit au sol / Floor Circuit			
	25	1	Aimant / Magnet (Cie / Co)	Circuit plafond / Grid Circuit			