

DynamO Théâtre – *Ghosts and ladders*

TECH SHEET

TYPE OF PRODUCTION: Theatre of acrobatic movement
TYPE OF VENUE: Theatre, auditorium.
RUNNING TIME: 55 minutes.
TOURING PERSONNEL: 3 performers, 1 musician and 2 technicians.

THE PRESENTER HEREBY UNDERTAKES AND AGREES AS FOLLOWS:

1. To ensure that someone in charge (technical representative of the presenter) is on hand in the venue at all times.
2. To provide a well-built and leveled stage of a minimum of 33' (9.8m) in width, 26' (8m) in depth and 16' (4.9 m) in height (clearance).
3. To provide four (4) stagehands during unloading, loading, set-up and strike of the set. One (1) sound technician, two (2) lighting technicians and one stagehand are required. Please note that the tasks may change depending on production needs.
4. To provide a minimum of 5 to 6 hours to put up the set, hang and focus lights and set sound levels. Showcall is two (2) hours and includes the warm-up period before each performance.
5. To provide 2 (two) hours for load-in and strike. Please advise us if there are problems accessing to the stage.
6. To provide one 3' x 3' (1m x 1m) prop table on stage.
7. To provide clean heated dressing rooms, with mirrors, toilets, running water and showers, near the stage.
8. To provide performers with bottled water (2 liters per person per day) and cold drinks (juice).
9. To provide one bag of ice cubes (in case of injury) backstage during the entire performance.
10. To provide parking space for one truck and one car.
11. To provide grid and floor plans of theatre when the agreement is signed (i.e. at least 12 weeks before first performance).

TECHNICAL INFORMATION

Lighting

The required lighting equipment for our production is as follows:

48 x 2.4 kw dimmers
DMX link between dimmers and stage management
20 x medium PAR
2 x 2 kw fresnel
6 x 19-degree lekos
1 x 26-degree lekos
6 x 36-degree lekos
20 x 25-50-degree zoom lekos
4 x Varifocus (FOH)
27 floor circuits, 14 over the stage and 7 in the FOH are needed.
We provide our own gels.

Note: A pre-hanging may be requested if the set-up and performance are on the same day.

Sound

An accordionist performs live on stage during the show.

Sound equipment provided by the venue

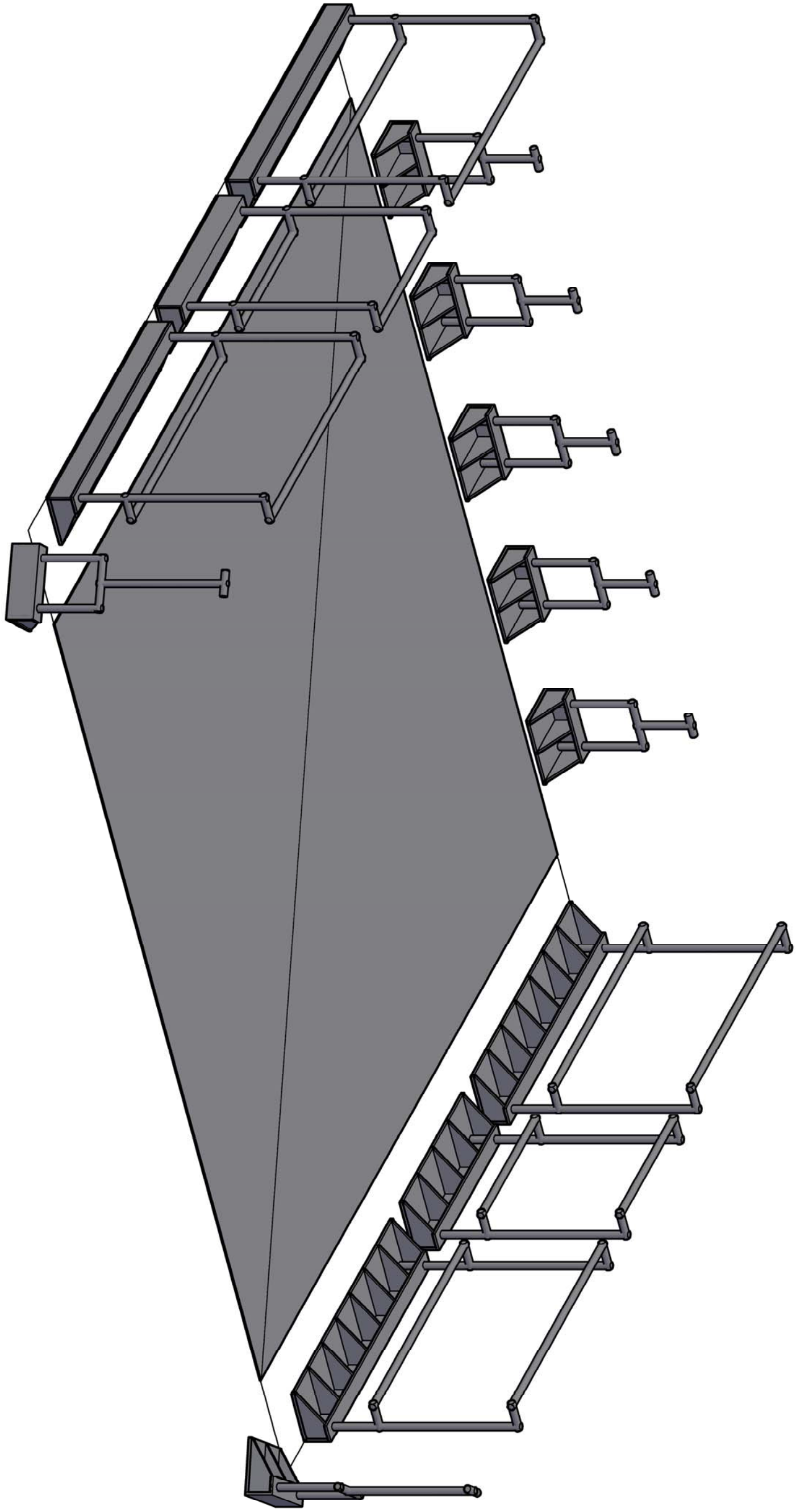
We require a one 3-way (professional) sound system and two stage monitors. In the stage management booth, we need two CD players with Auto-cue, two 31-band equalizers and one board with four subgroups.

Stage management

Stage management must be able to run the performance from its position in the audience. The company stage manager will be running the CD players as well as the lighting and sound boards. One 2m x 1.5m (6' x 4') L-shaped table is required.
A communication system must be set up between the stage management and the stage.

Trim

Black velvet, proscenium theatre



MODELISATION # 2

échelle :

L'envol de l'ange

scénographie : Pierre-Étienne Locas

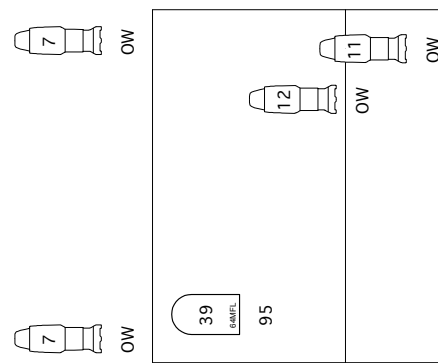
Kim
Selody
dynamo théâtre

mise en scène : Jackie Gosselin

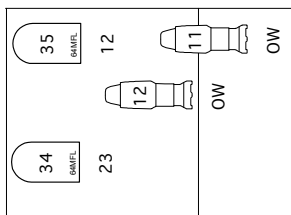
p. |

de 2

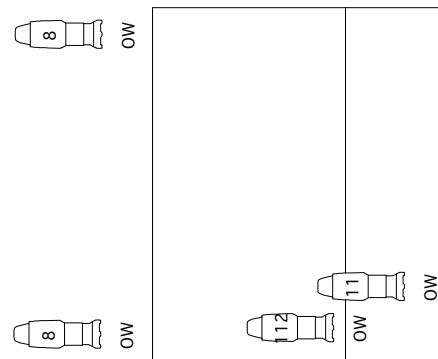
Accrochage en canard



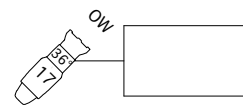
MJ4



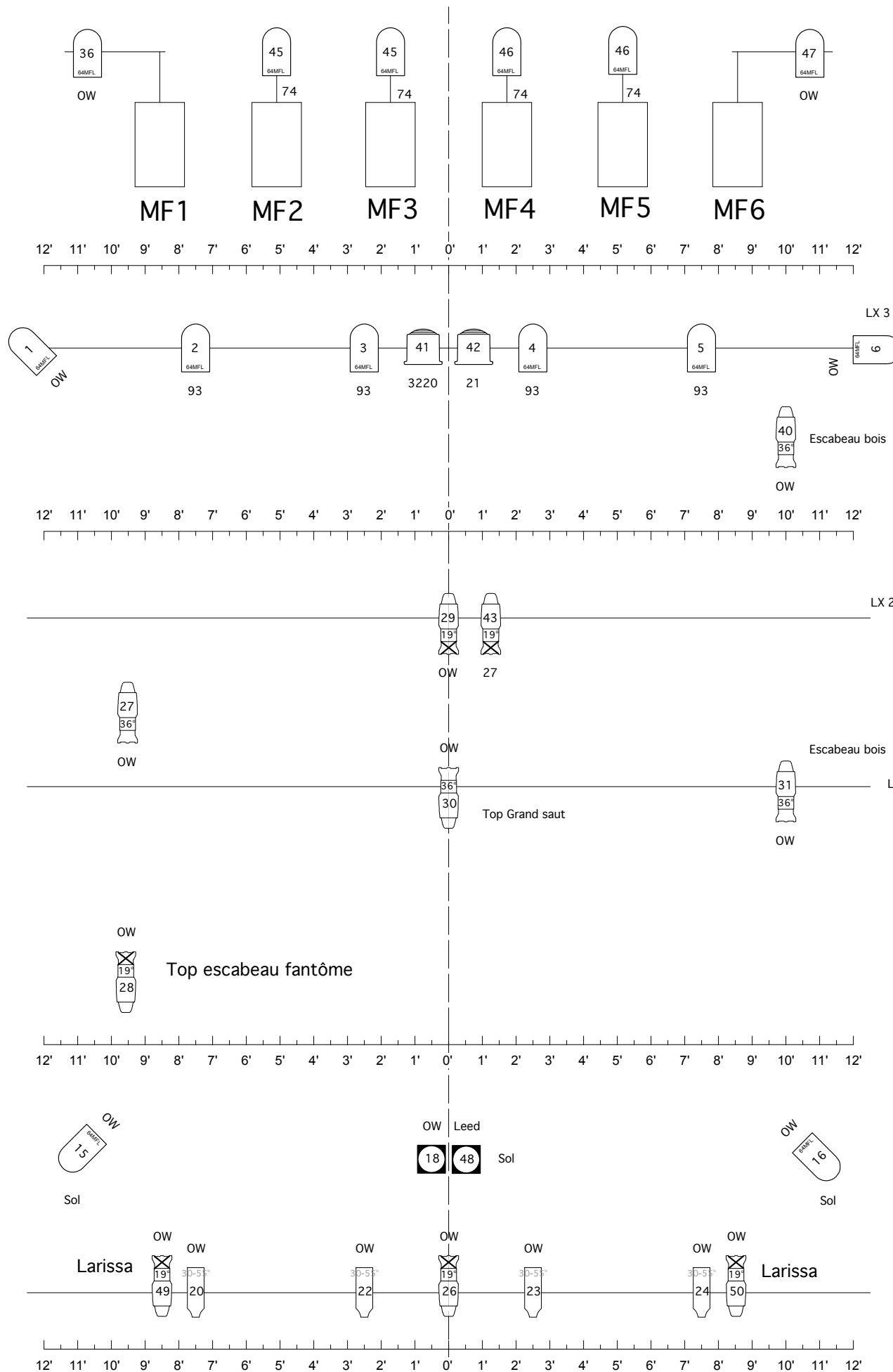
MJ3



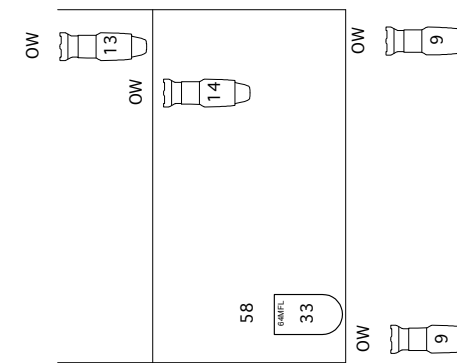
MJ2



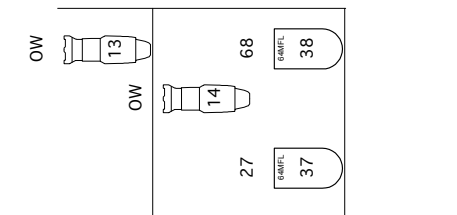
MJ1



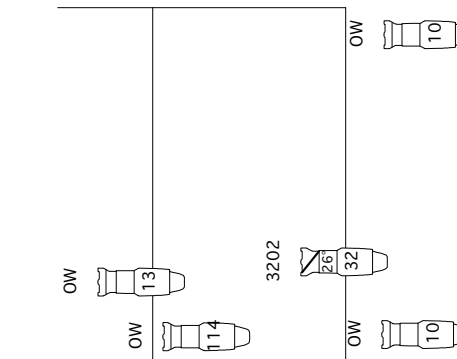
Accrochage en canard



MC4



MC3



MC2

MC1

FOH

Instruments	Num In Inventory	Used	Remaining
PAR 64 MFL	20	20	0
Source 4 19deg	20	6	14
Source 4 36deg	20	6	14
Varifocus Altman	30	4	26
Source 4 Zoom 25°-50°	26	20	6
Source 4 26deg	20	1	19
10" Fres	20	2	18
Accessories	Num In Inventory	Used	Remaining
Legend			
Color			

L'ENVOL DE L'ANGE	
DynamO Théâtre	
Maison de la culture Frontenac	
ÉCLAIRAGE	
Luc Prairie	Échelle: 1/4"=1' 15 Avril 2008